



*TravelDesign*  
by CDC



# COVID-19 OPERATIONAL GUIDELINES

VERSION 7  
22 APRIL 2021

*You are in Safe Hands*



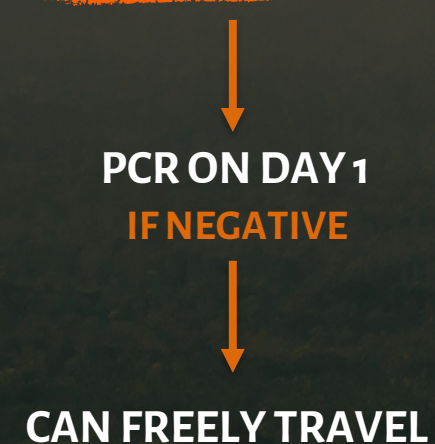
# TOURISTS TRAVEL PROCESS



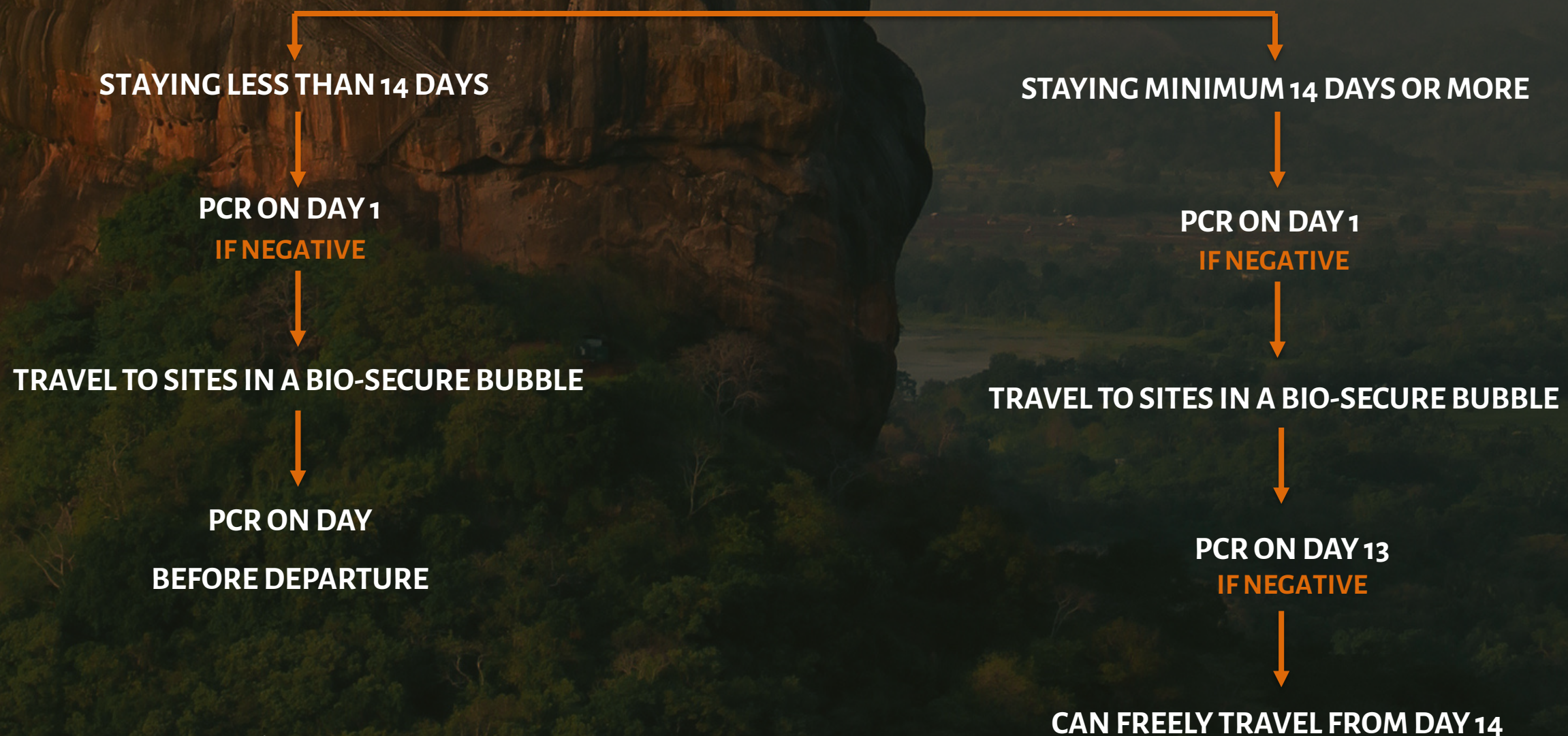
## ALL TRAVELERS

1. Plan your holiday with Connaissance & Apply for Visa online
2. Arrange for PCR (\$40 Per Test) and Insurance (\$ 12 pp) payments with Connaissance.
3. Test negative on a PCR test done 72 hours before boarding your flight.

### VACCINATED TRAVELERS



### NON-VACCINATED TRAVELERS

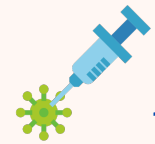






# VACCINATED TRAVELERS

## The Process for Vaccinated Travelers



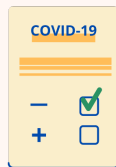
### VACCINATION REQUIREMENTS

1. Travelers need to have completed 14 days after their Second/Final Vaccination.
2. Travelers should carry original Vaccination Certificate/Card (Together with a certified English Translation if the Certificate/Card is not in English or relevant Data is not in English).
3. Any vaccination accepted by the country of origin is acceptable under the vaccinated route.



### VISA

A visa needs to be obtained online (<http://www.eta.gov.lk>) before traveling to Sri Lanka at a cost of \$35 USD. Visa on arrival will not be allowed.



### PCR TESTING

**PRE-BOARDING PCR** - A Negative PCR report issued by an accredited laboratory within **72 hours** prior to the departure or as per requirement of the airline.

**ARRIVAL PCR TEST**- Will be taken on arrival at the hotel, before checking in.

**INFANT'S BELLOW 2** – Exempt from PCR Testing



### NON-VACCINATED CHILDREN AND ACCOMPANYING TRAVELERS

**INFANTS (BELLOW 2 YEARS)** – Will be able able to accompany parents/guardians and will **NOT** need to have a PCR test on Arrival.

**CHILDREN (2 TO 11.9 YEARS)** – Will be able able to accompany parents/guardians and will **need to have a PCR test on Arrival**.

**Other Passengers (12 years and above)** - Will not be able to move freely with parents/other passengers and will need to stay **14 days in a Bio-Secure Bubble**. If they wish to travel together, they can spend 14 days in the Bio Secure Bubble.



### MOVEMENT

Travelers will **only need to stay in the Bio-Secure Bubble (Level 1 Hotel)** until they receive the results of their Arrival PCR Test. Tests results usually come within 24 hours taking a maximum of 36 hours. Once they receive a negative result, **they are free to travel without any restrictions**.

# NON-VACCINATED TRAVELERS

The Process for Non-Vaccinated Travelers



## VISA

A visa needs to be obtained online (<http://www.eta.gov.lk>) before traveling to Sri Lanka at a cost of \$35 USD. Visa on arrival will not be allowed.



## PCR TESTING

**PRE-BOARDING PCR** - A Negative PCR report issued by an accredited laboratory within **72 hours** prior to the departure or as per requirement of the airline.

**ARRIVAL PCR TEST**- Will be taken on arrival at the hotel, before checking in.

**DEPARTURE / DAY 13 PCR TEST** - If stay is more than 14 days – perform PCR on 11-14th day. If stay is between 5-14 days – perform the PCR depending on the date of departure (i.e. 24-48 hours before departure). If stay is less than 5 days - no exit PCR required

**CHILDREN BELOW 2 ARE EXEMPT FROM PCR. CHILDREN BETWEEN 2 AND 12 WILL NEED TO TAKE ONLY 1 PCR UPON DEPARTURE OR ON DAY 13, WHICH EVER COMES FIRST.**



## MOVEMENT

Travelers will **only need to stay in the Bio-Secure Bubble (Level 1 Hotels) for 14 days**. After the 14 days, guests are free to travel without any restrictions. After receiving a negative result from the arrival PCR, they are free to travel to approved sites.





ARRIVAL PCR

DEPARTURE / DAY  
13 PCR

INSURANCE

MAX. DAYS REQUIRED  
IN BIO-SECURE BUBBLE

VACCINATED

40 USD per test ✓



12 USD pp ✓

01 Day

ADULTS

(12 years & above)

NON-VACCINATED

40 USD per test ✓

40 USD per test ✓

12 USD pp ✓

14 Day

WITH VACCINATED PARENTS

40 USD per test ✓



12 USD pp ✓

01 Day

CHILDREN

(2 to 11.9 years)

WITH NON-VACCINATED PARENTS



40 USD per test ✓

12 USD pp ✓

14 Day

WITH VACCINATED PARENTS



12 USD pp ✓

01 Day

INFANTS

(below 2 years)

WITH NON-VACCINATED PARENTS



12 USD pp ✓

14 Day





# THE BIO-SECURE BUBBLE



Summary of the NON-RESTRICTIVE Bio-Secure Bubble



## TO WHOM DOES THIS APPLY?

**VACCINATED TRAVELER**- Only need to stay in the Bio-Secure Bubble until the results of arrival PCR. 24-36 Hours.

**NON-VACCINATED TRAVELER**- Will need to stay 14 days in the Bio-Secure Bubble.



## LEVEL 1 HOTELS

- Travelers Adhering to the bubble, can only stay in Level 1 hotels. Hotels can be found at [www.Srilanka.travel/helloagain](http://www.Srilanka.travel/helloagain).
- **The stay is NON-RESTRICTIVE, and they can use all hotel facilities, such as Beach, Spa, Pool, etc...**
- **Guests can change between Level 1 hotels as they wish.**
- Hotels need to be certified "Safe & Secure" through an audit by Sri Lanka Tourism Development Authority conducted by KPMG or E&Y. Hotels then opt in to level 1.
- Once a guest stays overnight in a non level 1 hotel after required stay period, they **can not reenter a level 1 hotel**.



## APPROVED VISITS, SITES AND MOVEMENT

- Guests adhering to the Bubble, will only be able to visit approved sites. **This includes almost all cultural sites & national parks**; An updated List can be found at - [www.Srilanka.travel/helloagain](http://www.Srilanka.travel/helloagain)
- All visits will need to be preplanned. Guests will not be able to change the itinerary without prior notice.
- Outside Restaurants and niche visits such as Boat Rides can be organized on case-by-case basis.



# TRAVEL REQUIREMENTS -VISA

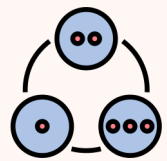


## General Travel Requirements for Travel to Sri Lanka



### VISA

A visa needs to be obtained online (<http://www.eta.gov.lk>) before traveling to Sri Lanka at a cost of \$35 USD. Visa on arrival will not be allowed.



### PROCEDURE TO OBTAIN VISA -

1. Apply and pay for Visa online (<http://www.eta.gov.lk>) and provide booking confirmation code of Level 1 hotel bookings, this will be provided by Connaissance. Once done the Visa will be in ***"Pending"*** status.
2. Pay Connaissance for **PCR Tests depending on duration of stay** and Sri Lanka Covid-19 Insurance, provide us guest details and the ETA number from the visa application.
3. Once done, the authorities will enter the details into the system and the Visa will be confirmed.



# TRAVEL REQUIREMENTS - INSURANCE



General Travel Requirements for Travel to Sri Lanka



## COVID-19 INSURANCE COVER

At the price of USD 12 per person, the insurance will provide a maximum cover of USD 50,000 for 1 Month (Please check the link for more details). This will cover costs of private hospitalization, ambulance and other expenses in the case a client is positive.

The payment for the Insurance will need to be made to DMC or hotel **(In this case to Connaissance)**.

If clients are staying for longer than 1 month, they will need to get an extension of the insurance. Please contact us for more details.

For all the details of the Insurance - [https://sltda.gov.lk/storage/common\\_media/COVID-19%20Insured%20\(1\)2114407123.pdf](https://sltda.gov.lk/storage/common_media/COVID-19%20Insured%20(1)2114407123.pdf)







# PROCEDURE IF COVID-19 POSITIVE



What happens in the off-chance that a guest is Covid-19 Positive,

- 
- ## NON-SYMPTOMATIC COVID POSITIVE GUESTS
- The guests will be isolated within the current hotel. They will not have contact with outsiders.
  - If Isolation not possible in the hotel, they will be moved to an isolation hotel.
  - If recommended by the designated medical officer, guests will be moved to a private hospital approved by the Ministry of Health.

- 
- ## SYMPTOMATIC COVID POSITIVE GUESTS
- Guests will be moved to a private hospital approved by the Ministry of Health.

- 
- ## MANDATORY COVID-19 INSURANCE COVER
- The insurance will provide a maximum cover of USD 50,000. This will cover costs of private hospitalisation, ambulance and other expenses in the case a client is positive.



# CONTACT INFORMATION

For any further information, do not hesitate to get in touch with us.

**ANUSHKA PERERA**  
**DIRECTOR OPERATIONS**

+ 94 77 375 4114    
anushka@connaissance.lk 

**MAXIME WICKRAMASINGHE**  
**ATTACHÉ TO THE BOARD OF DIRECTORS**

+ 94 77 192 9971    
maxime@connaissance.lk 

General

[cdctrv@connaissance.lk](mailto:cdctrv@connaissance.lk)

[www.connaissance.lk](http://www.connaissance.lk)



# AYUBOWAN!

LIVE A LONG LIFE!



TravelDesign  
by CDC