



TravelDesign
by CDC



COVID-19 OPERATIONAL GUIDELINES

VERSION 10
19 JULY 2021

You are in Safe Hands

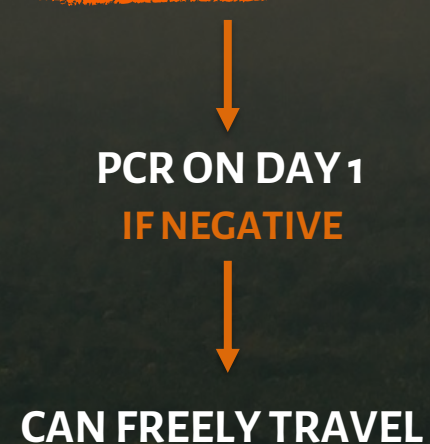
TOURISTS TRAVEL PROCESS



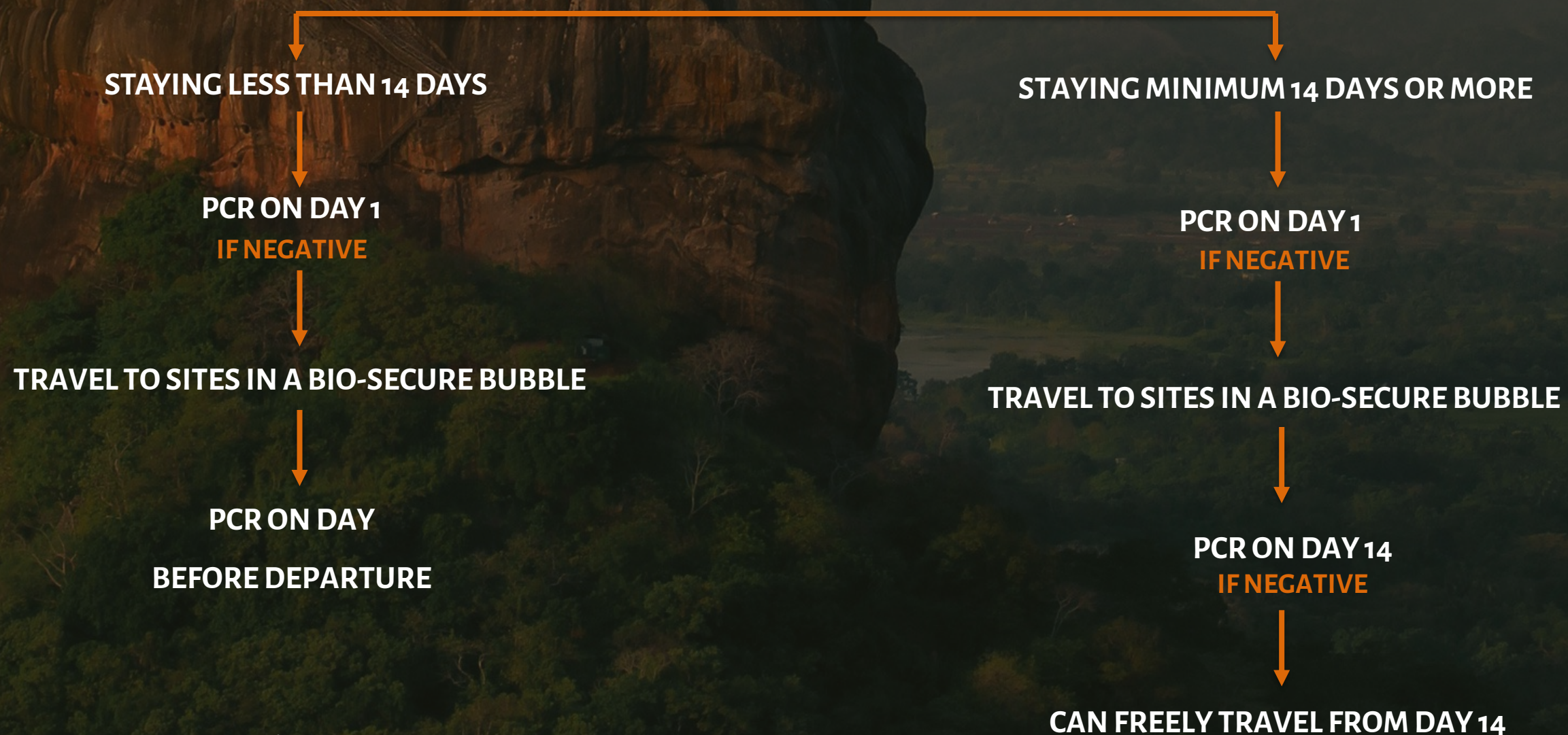
ALL TRAVELERS

1. Plan your holiday with Connaissance & Apply for Visa online
2. Arrange for PCR (\$40 Per Test) and Insurance (\$ 12 pp) payments with Connaissance.
3. Test negative on a PCR test done 72 hours before boarding your flight.

VACCINATED TRAVELERS

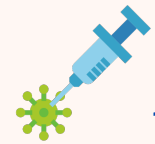


NON-VACCINATED TRAVELERS



VACCINATED TRAVELERS

The Process for Vaccinated Travelers



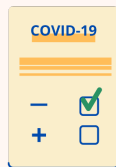
VACCINATION REQUIREMENTS

1. Travelers need to have completed 14 days after their Second/Final Vaccination.
2. Travelers should carry original Vaccination Certificate/Card (Together with a certified English Translation if the Certificate/Card is not in English or relevant Data is not in English).
3. Any vaccination accepted by the country of origin is acceptable under the vaccinated route.



VISA

A visa needs to be obtained online (<http://www.eta.gov.lk>) before traveling to Sri Lanka at a cost of \$35 USD. Visa on arrival will not be allowed.



PCR TESTING

PRE-BOARDING PCR - A Negative PCR report issued by an accredited laboratory within 72 hours prior to the departure or as per requirement of the airline.

1ST PCR TEST (ARRIVAL) - Will be taken on arrival at the hotel, before checking in.

Children (2-18 years old) will need a PCR test on arrival and again on day 7 if they are not vaccinated. Only infants under 2 years of age will be exempt from PCR testing. Only Infants below 2 will be exempt from PCR Testing.



NON-VACCINATED CHILDREN AND ACCOMPANYING TRAVELERS

INFANTS (BELLOW 2 YEARS) – Will be able able to accompany parents/guardians and will NOT need to have a PCR test on Arrival.

CHILDREN (2 TO 18 YEARS) – Will be able able to accompany parents/guardians and will need to have a PCR test on Arrival & Day 7.

Other Passengers (18 years and above) - Will not be able to move freely with parents/other passengers and will need to stay 14 days in a Bio-Secure Bubble. If they wish to travel together, they can spend 14 days in the Bio Secure Bubble.



MOVEMENT

Travelers will only need to stay in the Bio-Secure Bubble (Level 1 Hotel) until they receive the results of their Arrival PCR Test. Tests results usually come within 24 hours taking a maximum of 36 hours. Once they receive a negative result, they are free to travel without any restrictions. Once they leave the Bio-Secure Bubble (Level 1 Hotel) they may not reenter it.

NON-VACCINATED TRAVELERS

The Process for Non-Vaccinated Travelers



VISA

A visa needs to be obtained online (<http://www.eta.gov.lk>) before traveling to Sri Lanka at a cost of \$35 USD. Visa on arrival will not be allowed.



PCR TESTING

PRE-BOARDING PCR - A Negative PCR report issued by an accredited laboratory within **72 hours** prior to the departure or as per requirement of the airline.

1ST PCR TEST (ARRIVAL)- Will be taken on arrival at the hotel, before checking in.

2ND PCR TEST (DEPARTURE / DAY 14) - . If stay is between 5-14 days – perform the PCR 24 hours before departure. If stay is more than 14 days – perform PCR on 11-14th day. If stay is less than 5 days - no exit PCR required.

CHILDREN BELLOW 2 ARE EXEMPT FROM PCR. CHILDREN BETWEEN 2 AND 12 WILL NEED TO TAKE ONLY 1 PCR UPON DEPARTURE OR ON DAY 14, WHICH EVER COMES FIRST.



MOVEMENT

Travelers will **only need to stay in the Bio-Secure Bubble (Level 1 Hotels) for 14 days**. After the 14 days, guests are free to travel without any restrictions. After receiving a negative result from the arrival PCR, they are free to travel to approved sites.



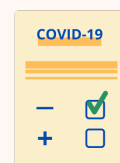
VACCINATED TRAVELERS – WHO HAVE NOT COMPLETED 14 DAYS AFTER THE VACCINATION

The Process for Travelers who have not completed two weeks after the vaccination



VISA

A visa needs to be obtained online (<http://www.eta.gov.lk>) before traveling to Sri Lanka at a cost of \$35 USD. Visa on arrival will not be allowed.



ARRIVING 7 OR MORE DAYS AFTER COMPLETION OF VACCINATION

PRE-BOARDING PCR - A Negative PCR report issued by an accredited laboratory within 72 hours prior to the departure or as per requirement of the airline.

1ST PCR TEST (ARRIVAL)- Will be taken on arrival at the hotel, before checking in.

2ND PCR (DAY 7)– Will be taken on day 7. They can then leave the Bio-Bubble and travel without any restriction after negative second test.

Only Infants below 2 will be exempt from PCR Testing.



ARRIVING LESS THAN 7 DAYS AFTER THE END OF THE VACCINATION

PRE-BOARDING PCR - A Negative PCR report issued by an accredited laboratory within 72 hours prior to the departure or as per requirement of the airline.

1ST PCR TEST (ARRIVAL)- Will be taken on arrival at the hotel, before checking in.

2ND PCR– Will be taken on the day they complete 14 days after vaccination. They can leave the Bio-Bubble and travel without any restriction after a negative second test.

Only Infants below 2 will be exempt from PCR Testing.

PCR TEST SUMMARY

1st

PCR

1. VACCINATED

2. NON-VACCINATED

3. VACCINATED BUT NOT FINISHED 14 DAYS AFTER VACCINATION

When

Adults

< 2 Years

2-12 Years

12-18 Years

On Arrival at hotel



On Arrival at hotel



On Arrival at hotel



Day 7

Not required if staying less than 7 days



If non-vaccinated

If non-vaccinated



Day 14 or before departure.

Not required if staying less than 5 days



Day 7

Or before departure.



14 days after completion of vaccination

Or before departure.





TRAVEL REQUIREMENTS -VISA

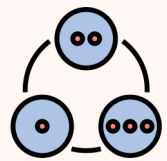


General Travel Requirements for Travel to Sri Lanka



VISA

A visa needs to be obtained online (<http://www.eta.gov.lk>) before traveling to Sri Lanka at a cost of \$35 USD. Visa on arrival will not be allowed.



PROCEDURE TO OBTAIN VISA -

1. Apply and pay for Visa online (<http://www.eta.gov.lk>) and provide booking confirmation code of Level 1 hotel bookings, this will be provided by Connaissance. Once done the Visa will be in *"Pending"* status.
2. Pay Connaissance for PCR Tests depending on duration of stay and Sri Lanka Covid-19 Insurance, provide us guest details and the ETA number from the visa application.
3. Once done, the authorities will enter the details into the system and the Visa will be confirmed.



TRAVEL REQUIREMENTS - INSURANCE

General Travel Requirements for Travel to Sri Lanka



COVID-19 INSURANCE COVER

At the price of USD 12 per person, the insurance will provide a maximum cover of USD 50,000 for **1 Month** (Please check the link for more details). This will cover costs of private hospitalization, ambulance and other expenses in the case a client is positive.

The payment for the Insurance will need to be made to DMC or hotel **(In this case to Connaissance)**.

If clients are staying for longer than 1 month, they will need to get an extension of the insurance. Please contact us for more details.

For all the details of the Insurance - [https://sltda.gov.lk/storage/common_media/COVID-19%20Insured%20\(1\)2114407123.pdf](https://sltda.gov.lk/storage/common_media/COVID-19%20Insured%20(1)2114407123.pdf)



THE BIO-SECURE BUBBLE



Summary of the NON-RESTRICTIVE Bio-Secure Bubble



TO WHOM DOES THIS APPLY?

VACCINATED TRAVELER- Only need to stay in the Bio-Secure Bubble until the results of arrival PCR. 24-36 Hours.

NON-VACCINATED TRAVELER- Will need to stay 14 days in the Bio-Secure Bubble.



LEVEL 1 HOTELS

- Travelers Adhering to the bubble, can only stay in Level 1 hotels. Hotels can be found at www.Srilanka.travel/helloagain.
- **The stay is NON-RESTRICTIVE, and they can use all hotel facilities, such as Beach, Spa, Pool, etc...**
- **Guests can change between Level 1 hotels as they wish.**
- Hotels need to be certified "Safe & Secure" through an audit by Sri Lanka Tourism Development Authority conducted by KPMG or E&Y. Hotels then opt in to level 1.
- Once a guest stays overnight in a non level 1 hotel after required stay period, they **can not reenter a level 1 hotel**.



APPROVED VISITS, SITES AND MOVEMENT


- Guests adhering to the Bubble, will only be able to visit approved sites. **This includes almost all cultural sites & national parks**; An updated List can be found at - www.Srilanka.travel/helloagain
- All visits will need to be preplanned. Guests will not be able to change the itinerary without prior notice.
- Outside Restaurants and niche visits such as Boat Rides can be organized on case-by-case basis.




PROCEDURE IF COVID -19 POSITIVE



What happens in the off-chance that a guest is Covid-19 Positive,

- 
- ## NON-SYMPTOMATIC COVID POSITIVE GUESTS
- The guests will be isolated within the current hotel. They will not have contact with outsiders.
 - If Isolation not possible in the hotel, they will be moved to an isolation hotel.
 - If recommended by the designated medical officer, guests will be moved to a private hospital approved by the Ministry of Health.

- 
- ## SYMPTOMATIC COVID POSITIVE GUESTS
- Guests will be moved to a private hospital approved by the Ministry of Health.

- 
- ## MANDATORY COVID-19 INSURANCE COVER
- The insurance will provide a maximum cover of USD 50,000. This will cover costs of private hospitalisation, ambulance and other expenses in the case a client is positive.

CONTACT INFORMATION

For any further information, do not hesitate to get in touch with us.

ANUSHKA PERERA
DIRECTOR OPERATIONS

+ 94 77 375 4114  
anushka@connaissance.lk 

MAXIME WICKRAMASINGHE
ATTACHÉ TO THE BOARD OF DIRECTORS

+ 94 77 192 9971  
maxime@connaissance.lk 

General

cdctrv@connaissance.lk

www.connaissance.lk

AYUBOWAN!

LIVE A LONG LIFE!



TravelDesign
by CDC